

Makeup and hairstyling

PRICE LIST

Nikki beauty signature Makeup
Makeup:

Party makeup- (fresh faced simple
glam)
k2000

Party makeup - (full glam)
k2500

Engagement makeup -k2800- 3500

Prom queen- k2000-3000

Photoshoot makeup - k2500-3500

Bridesmaid makeup glam/bridal party :
k2500-3500

Bridal :
Wedding day glam (bridal makeup and
hair):
\$480-550 (price depends on the look
you go for)

NIKKI BEAUTY
Permanent Makeup & Beauty Studio

Hairstyling



Hairstyling :

Party hair/ Bridal party hair/Engagement hair/Prom queen hair

Bridesmaids /bridal party hair:

Simple curls: k800-1500

Nikki beauty signature Hollywood waves: k2000-3500

Simple Hollywood waves:
K1000-1500

Hair updos: k1500-4000

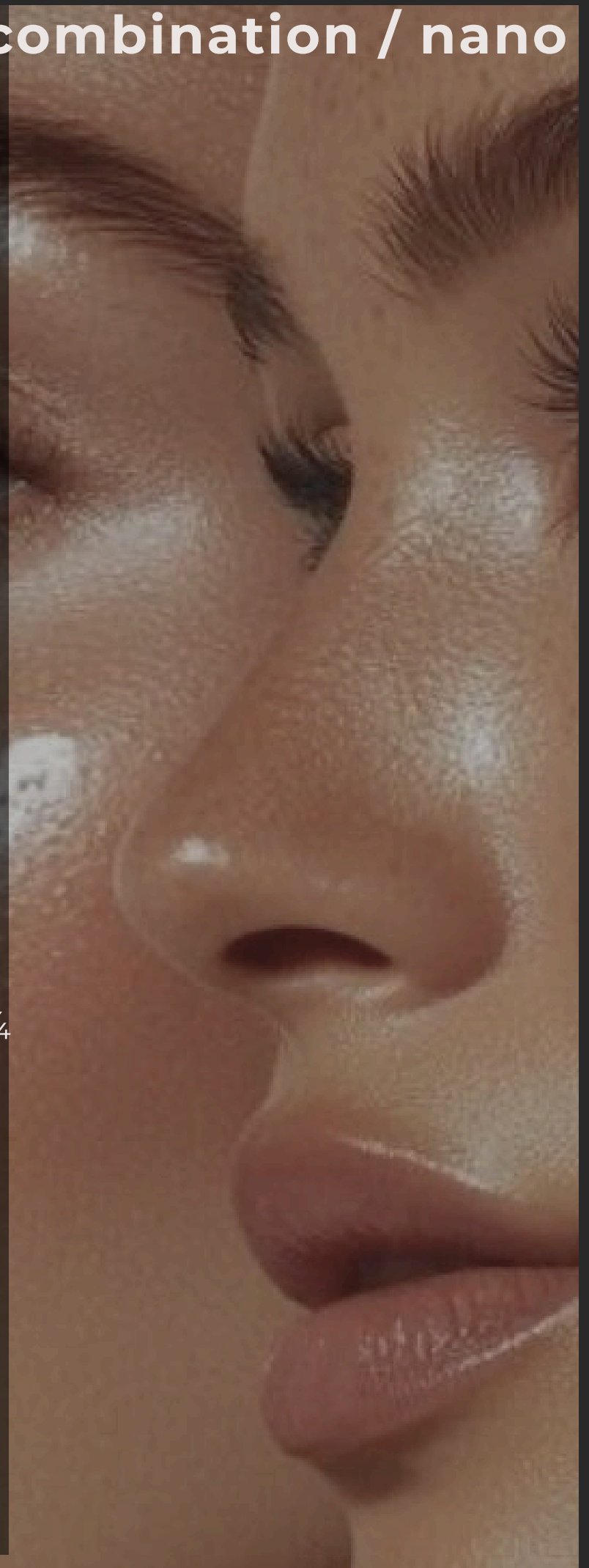
Microshading /powder brows/combination / nano hair strokes

- First session (2hrs): k 3150
- 6-week touch up (1hr): k1600
- 1-year touch up: k2500
- Color correction per session: k1600

Lip Blush

- First session (3hrs): k3150
- 6-week touch up (1hr): k1890
- 1-year touch up: k2625
- Dark Lip Neutralisation on average $\frac{3}{4}$ sessions required

Additional cost for each session.



Eyeliner

Lash enhancer: k1900

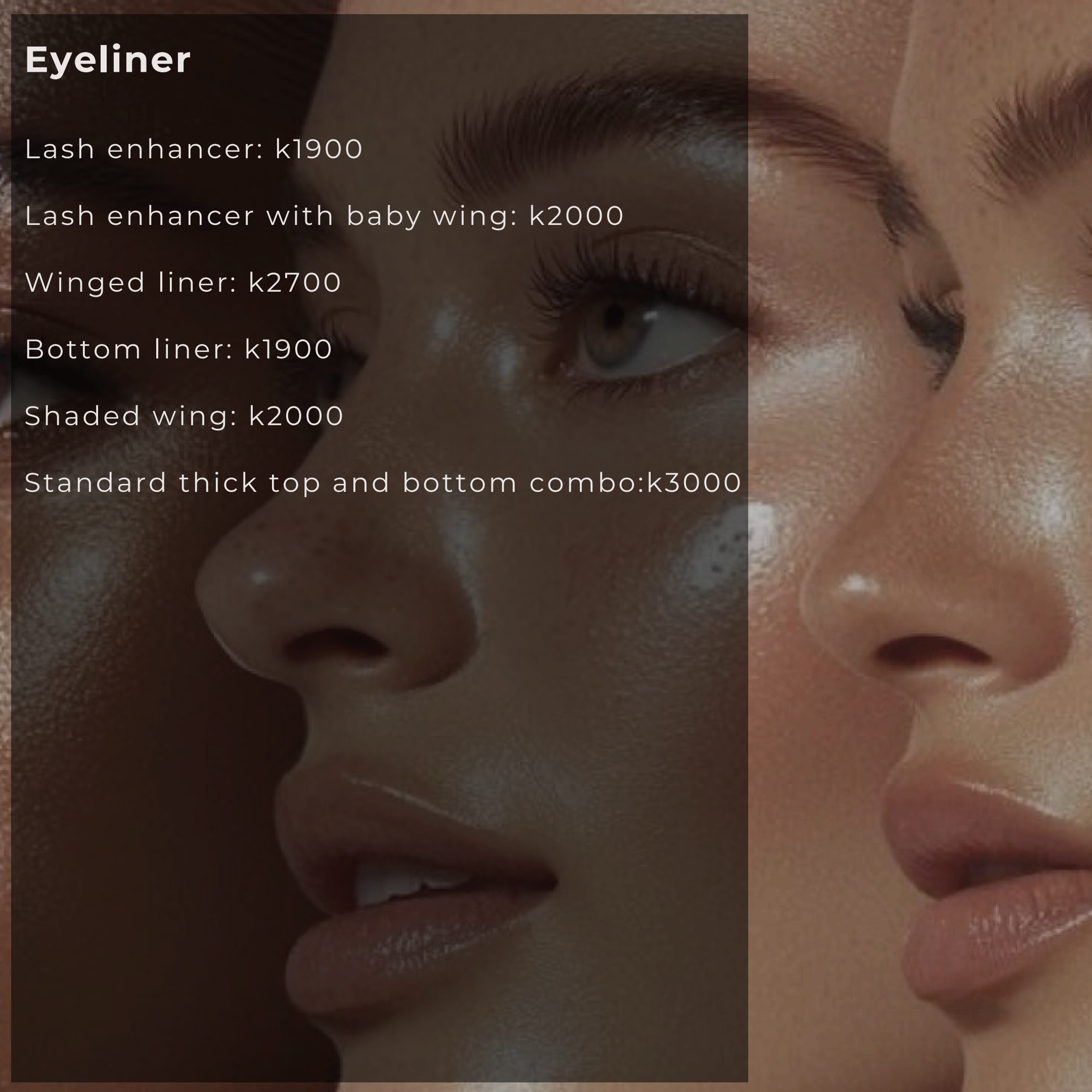
Lash enhancer with baby wing: k2000

Winged liner: k2700

Bottom liner: k1900

Shaded wing: k2000

Standard thick top and bottom combo:k3000





Makeup

Fresh faced beauty (soft glam) K500-650

Party makeup K600-850

Engagement makeup K850-1000

Prom queen makeup K600-900

Photoshoot Makeup k700-900

Bridesmaid makeup glam/bridal party K600-900

Bridal : Wedding day glamK900-1400

Kids makeup/hair :

Makeup : k300-600

Kids simple curls - k250-600

Kids simple updo - k350-600

Brow lamination

Nikki:

(Without wax and normal tint) -k600

(Includes wax and normal tint)- k750

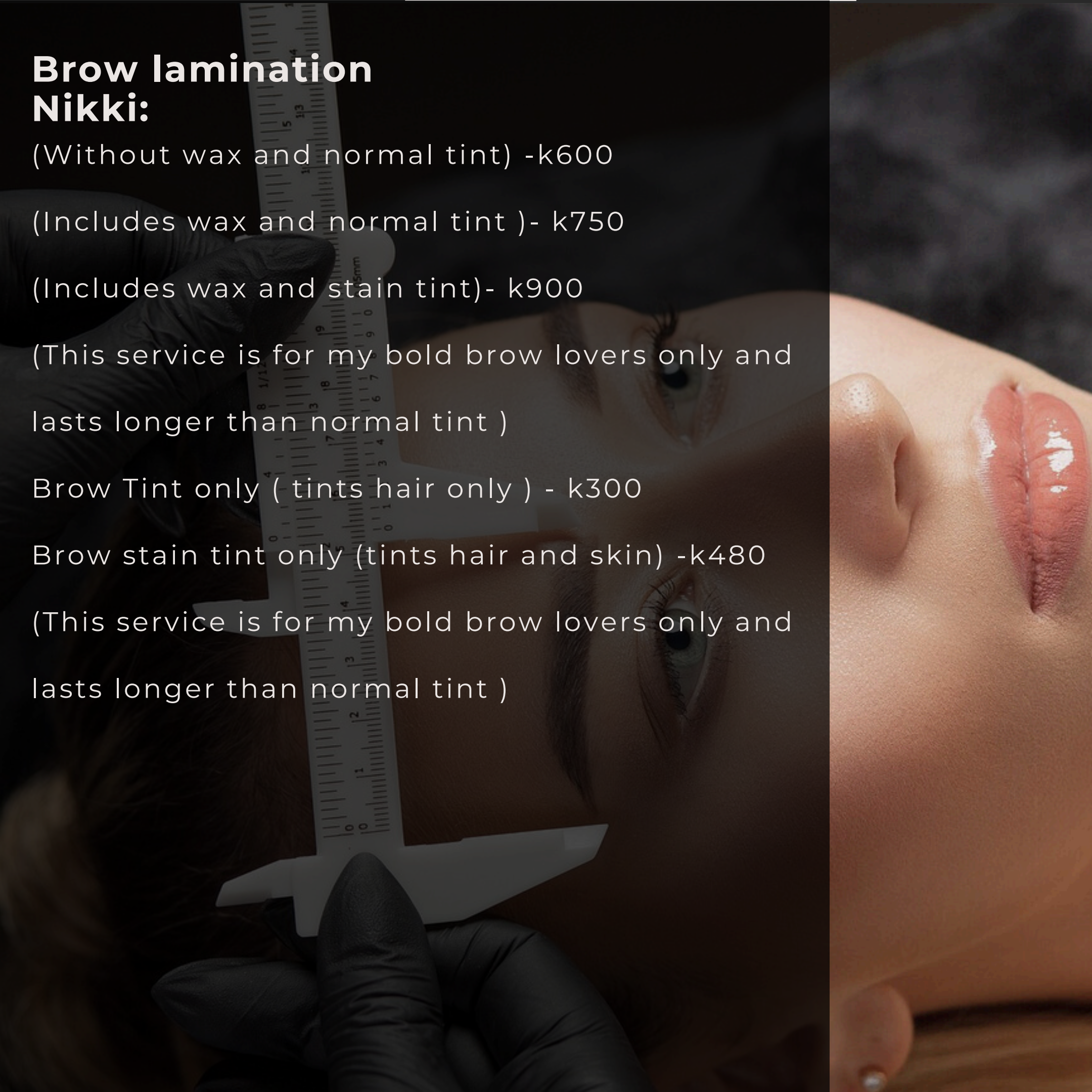
(Includes wax and stain tint)- k900

(This service is for my bold brow lovers only and lasts longer than normal tint)

Brow Tint only (tints hair only) - k300

Brow stain tint only (tints hair and skin) -k480

(This service is for my bold brow lovers only and lasts longer than normal tint)



Brow Lamination

Other therapist :

(Without wax and normal tint) -k550

(Includes wax and normal tint)- k650

(Includes wax and stain tint) - 750

(This service is for my bold brow lovers only and lasts longer than normal tint)

Brow tint only (tints only hair) -k250

Brow tint stain only (tints hair and skin)

K400

(This service is for my bold brow lovers only and lasts longer than normal tint)

Brow wax- 350

Threading/waxing

Full face K500

Upper lip K160

Chin k250

Full body K2100

Arms from K280

Half legs K250

Full legs K380

Full face K370

Eyebrow K200

Ears K90

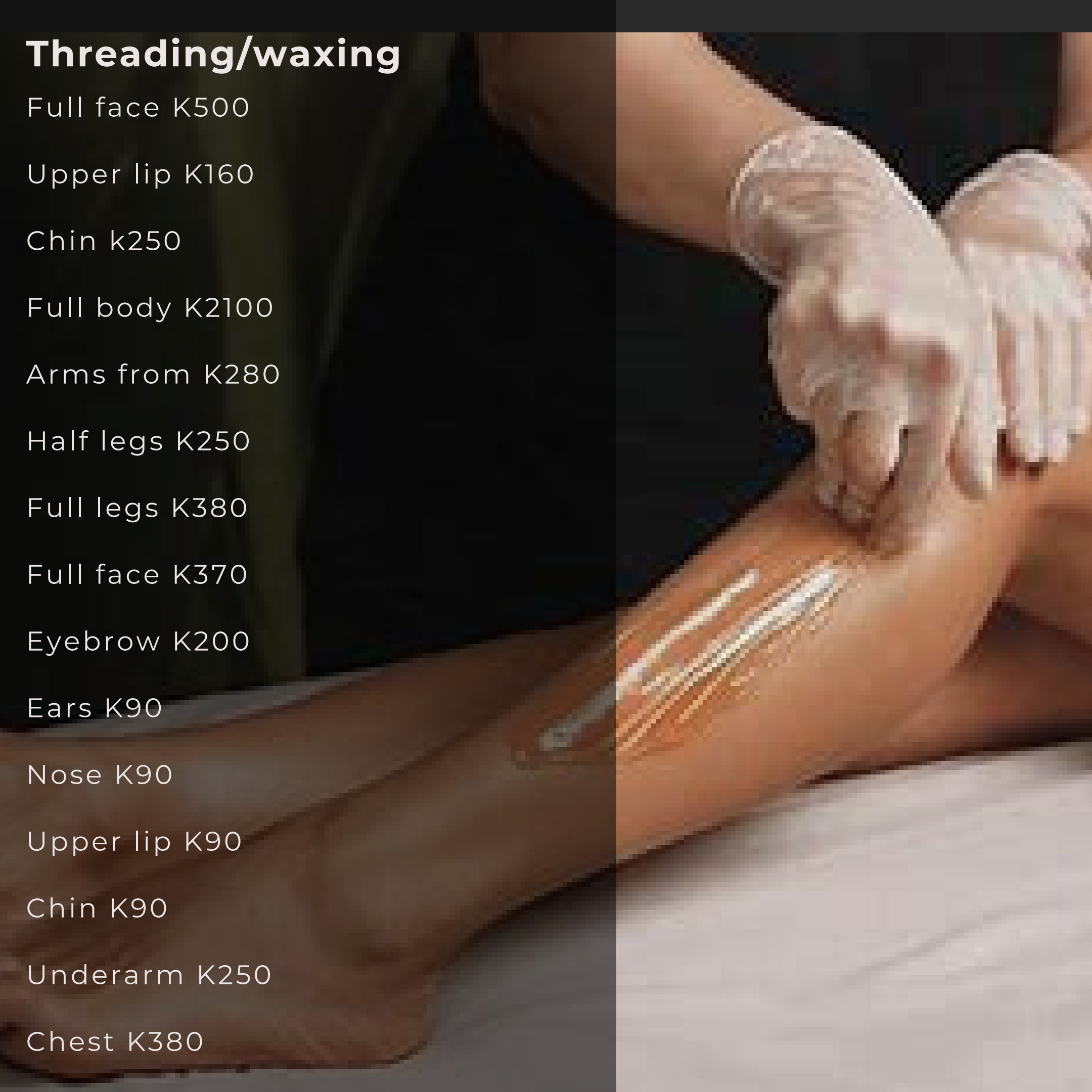
Nose K90

Upper lip K90

Chin K90

Underarm K250

Chest K380

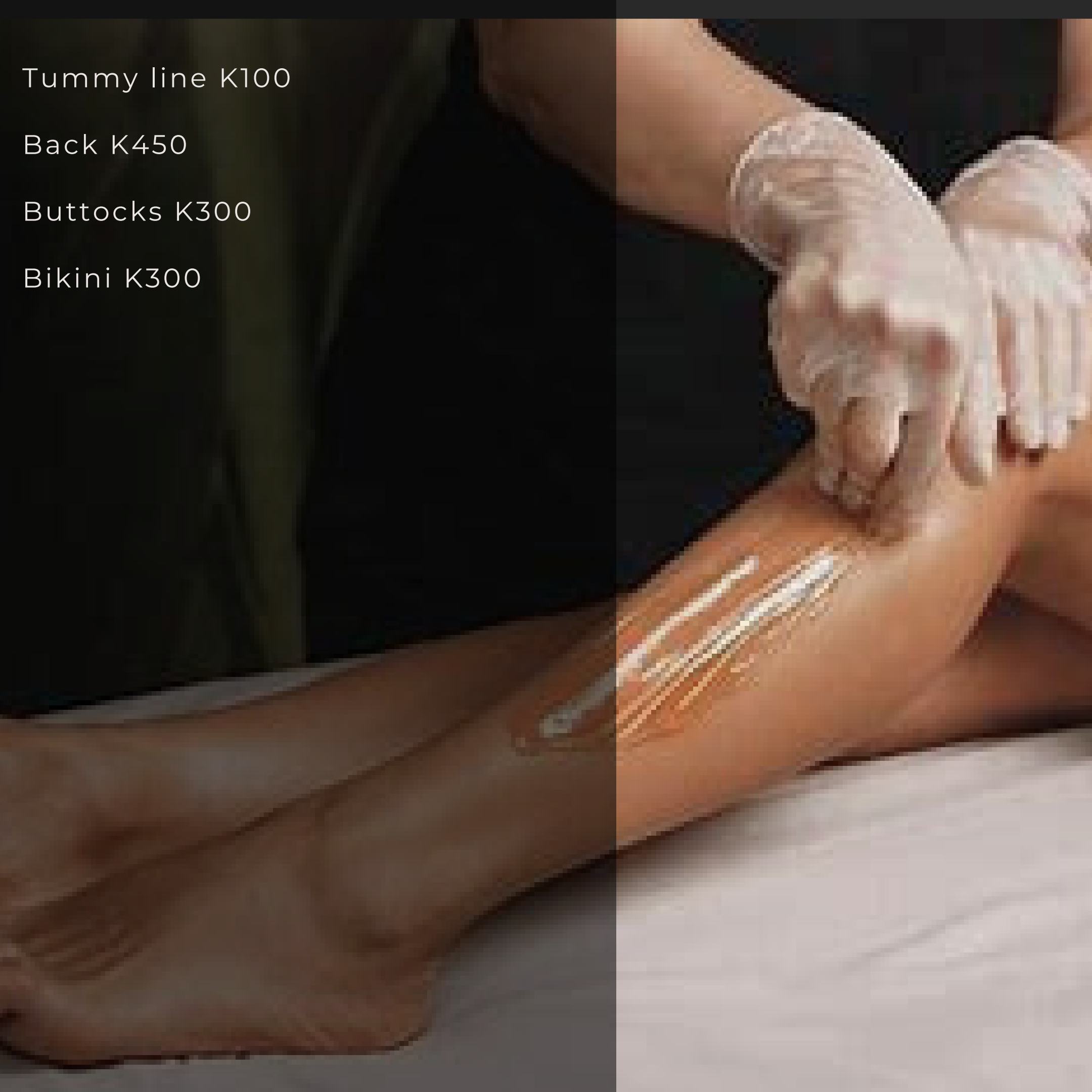


Tummy line K100

Back K450

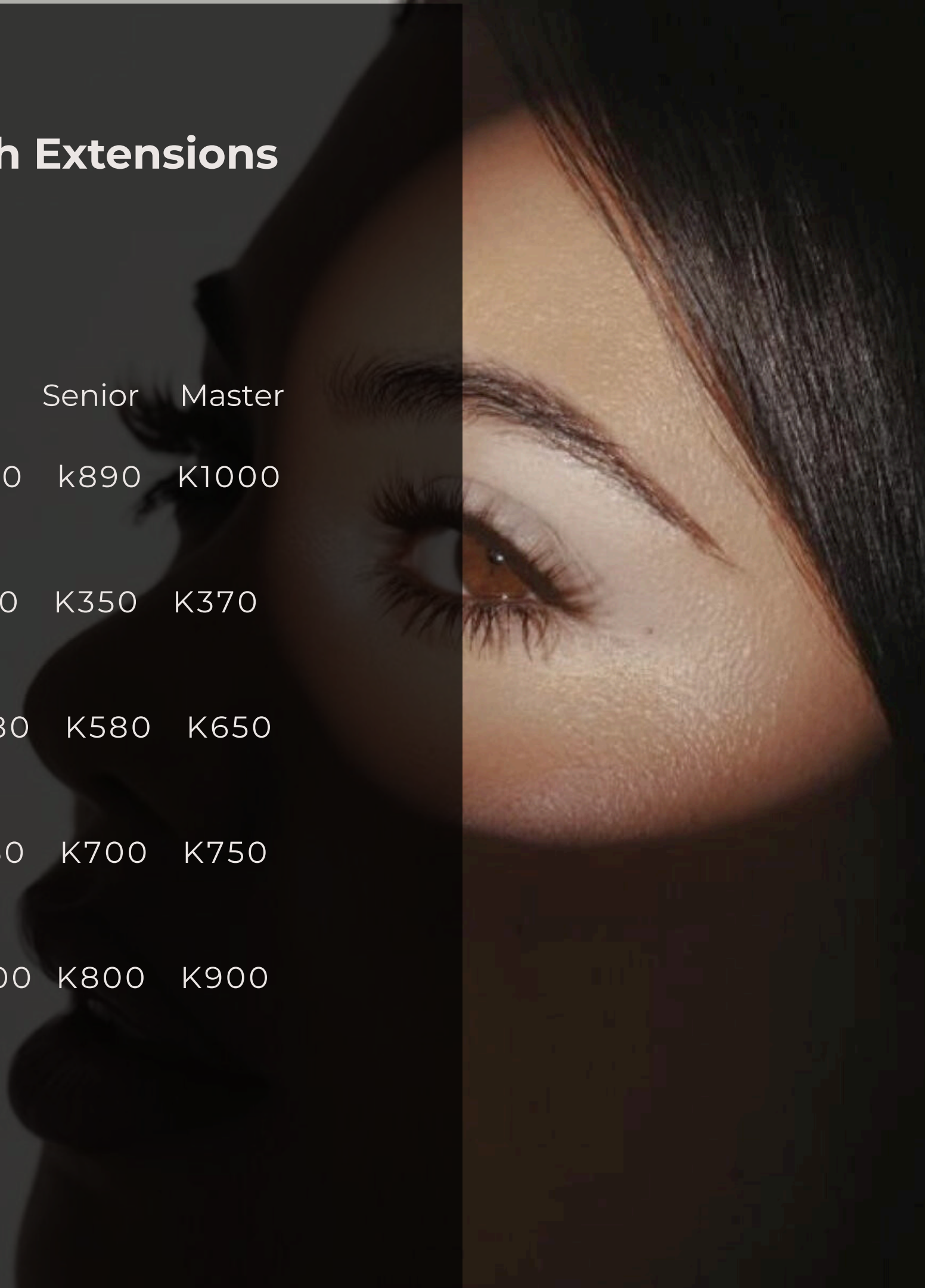
Buttocks K300

Bikini K300



Classic Lash Extensions

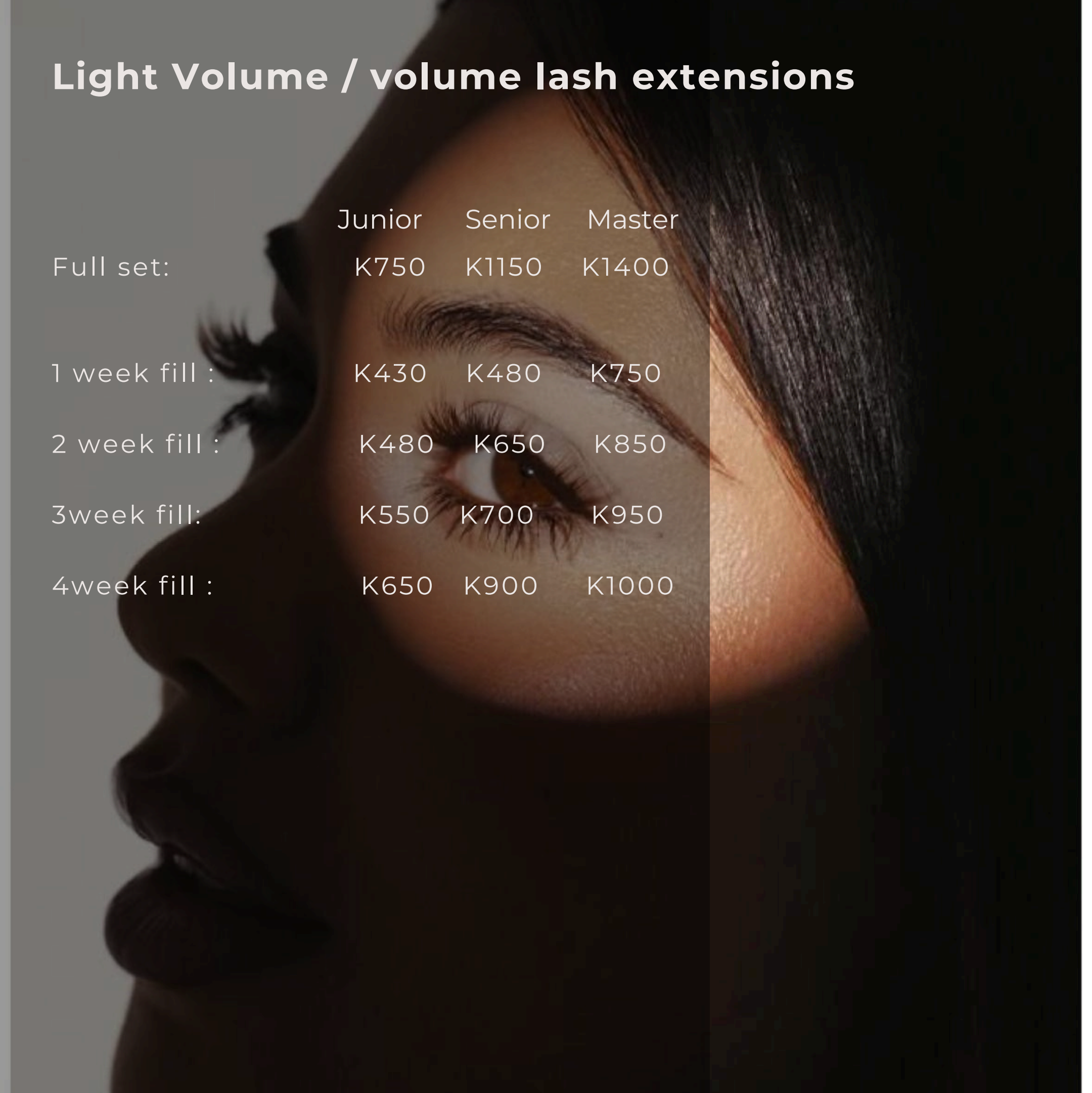
	Junior	Senior	Master
Fullset	K650	k890	K1000
1 week fill :	K320	K350	K370
2 week fill :	K480	K580	K650
3week fill:	K550	K700	K750
4week fill :	K600	K800	K900





Hybrid Lash

	Junior	Senior	Master
Full Set	k700	k950	k1200
1 week fill :	K430	K450	K700
2 week fill :	K450	K600	K800
3week fill:	K530	K650	K900
4week fill :	K600	K850	K950



Light Volume / volume lash extensions

	Junior	Senior	Master
Full set:	K750	K1150	K1400
1 week fill :	K430	K480	K750
2 week fill :	K480	K650	K850
3week fill:	K550	K700	K950
4week fill :	K650	K900	K1000

A close-up, high-quality portrait of a woman with dark skin and dark hair pulled back. She is looking directly at the camera with a soft, neutral expression. Her eyes are dark and framed by long, dark eyelashes. Her skin is smooth and has a natural glow. The lighting is soft and directional, coming from the upper left, which highlights the contours of her face and the texture of her skin. The background is a solid, light beige color. Overlaid on the left side of the image is white text in a clean, sans-serif font, listing beauty services and their prices.

Lash removal:

(Gentle removal, no damage
to natural lashes, painless)

Our lashes : k100

Outside work : k250

Facials

Mini facial K490

Deep cleanse facial K650

Basic facial K600

Nikki beauty signature facial
k700

Dermaplaning : K580

MASSAGE

Aromatherapy massage

60min. K650

90min. K950

Deep tissue massage

60min k850

90min. K1050

Swedish massage

60min. K750

90min. K900





MASSAGE

UKUCHINA MASSAGE

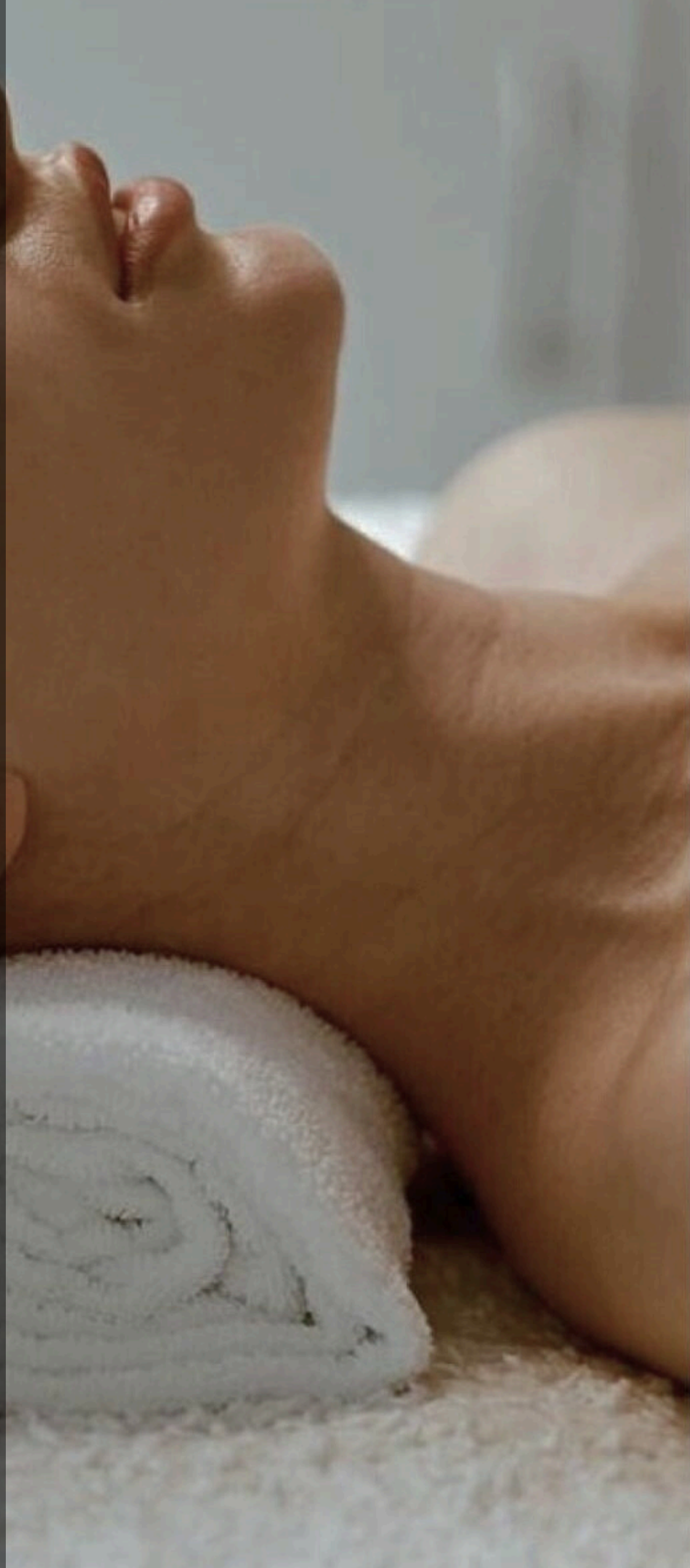
60min K900

90 mins K1050

Hot stone massage

60min. K900

90min. K1000



MASSAGE

Back neck shoulder massage

30min. K500

45min. K600

60min K750

Head and facial massage :

45min- K600

Hand massage

15min - K150

45min - K300

short k800

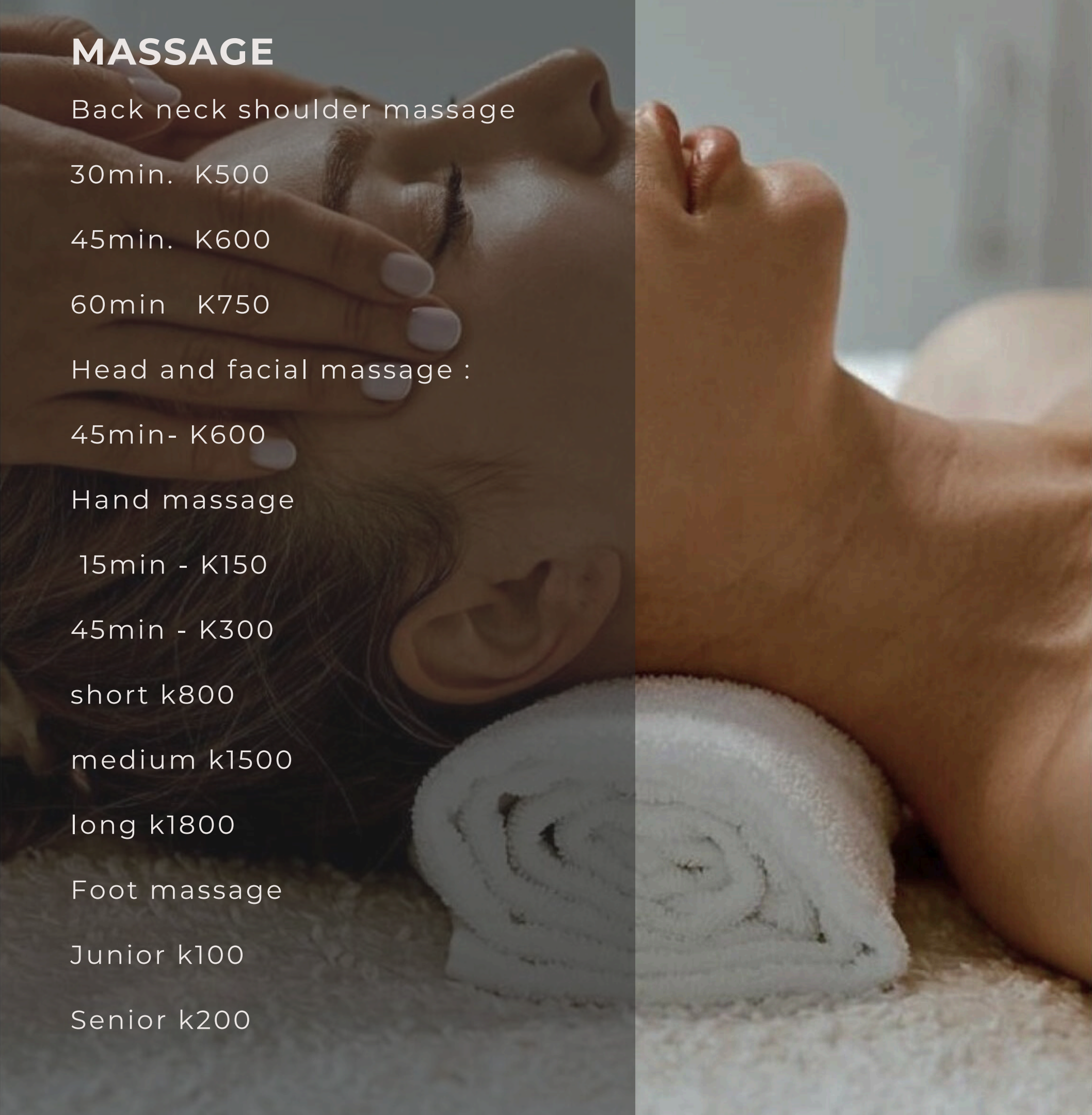
medium k1500

long k1800

Foot massage

Junior k100

Senior k200



MASSAGE

Back neck and shoulder -

30min k400

60min k750

Korean Headspa k1600



MASSAGE

Thai massage - 1000

Sports massage (deeper than deep
tissue massage) - 1000

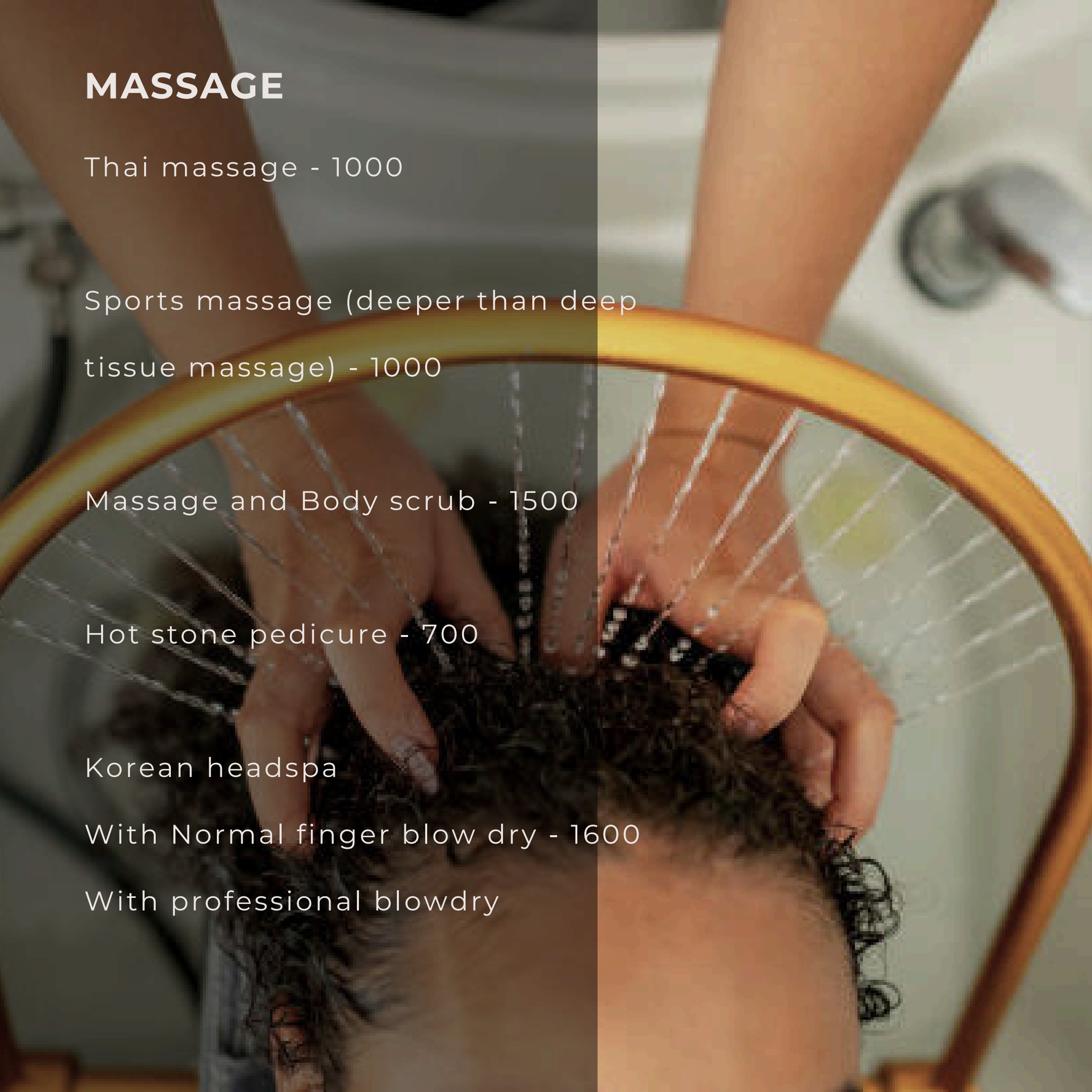
Massage and Body scrub - 1500

Hot stone pedicure - 700

Korean headspa

With Normal finger blow dry - 1600

With professional blowdry



MASSAGE

Straight :

Short hair - 350

Med- 400

Long hair -450

With curl styling :

Short - 350

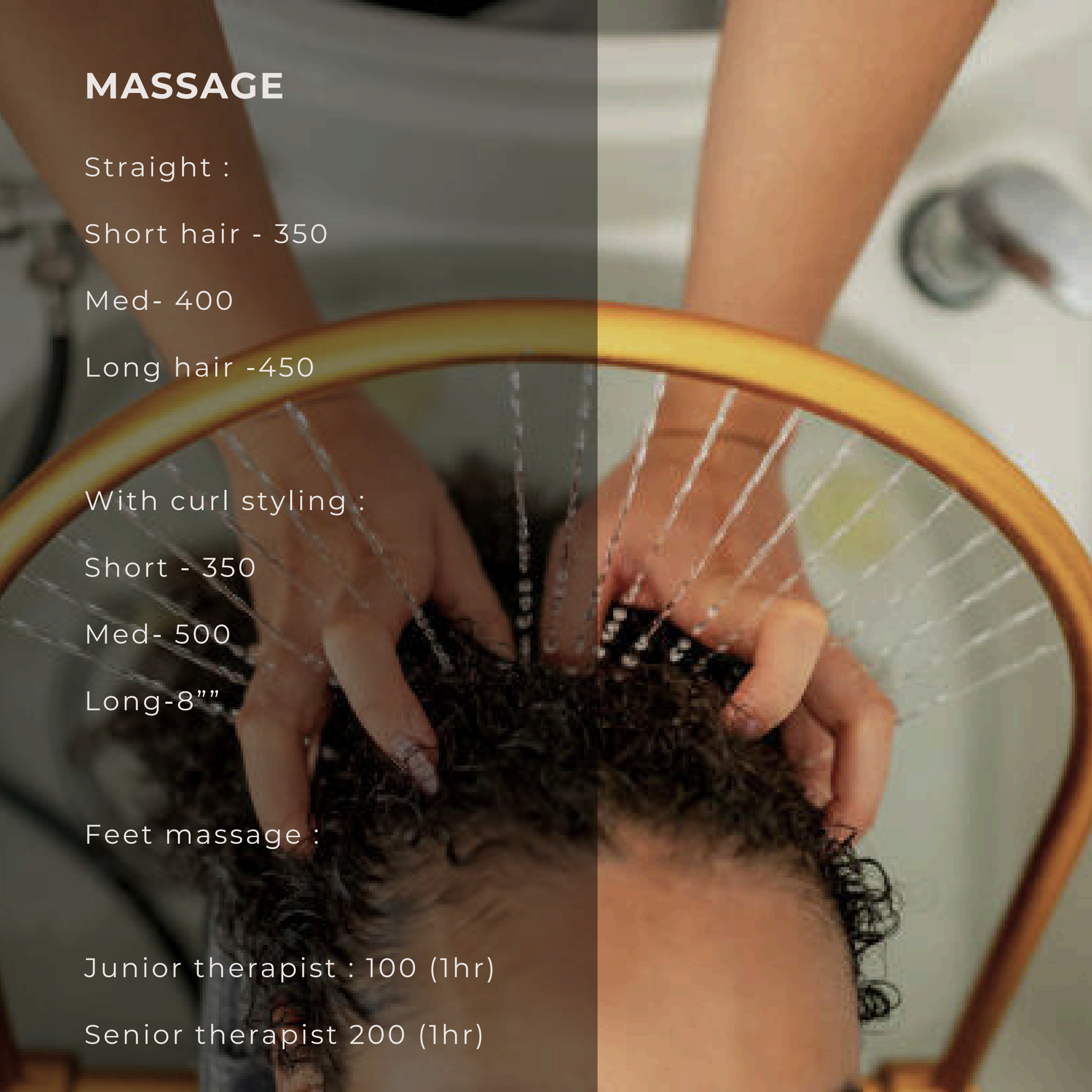
Med- 500

Long-8'''

Feet massage :

Junior therapist : 100 (1hr)

Senior therapist 200 (1hr)



NAILS

Manicure :

Shaping, buffing, cuticle care + Nail Polish. K500

Express manicure,

Shaping, buffing + cuticle care : K 400

Signature Nikki beauty luxury manicure :

Softening soak + sugar scrub, hydrating mask & extended
massage with gel nail polish K550

Gel polish K450

Polygel K690

Rubber gel k600

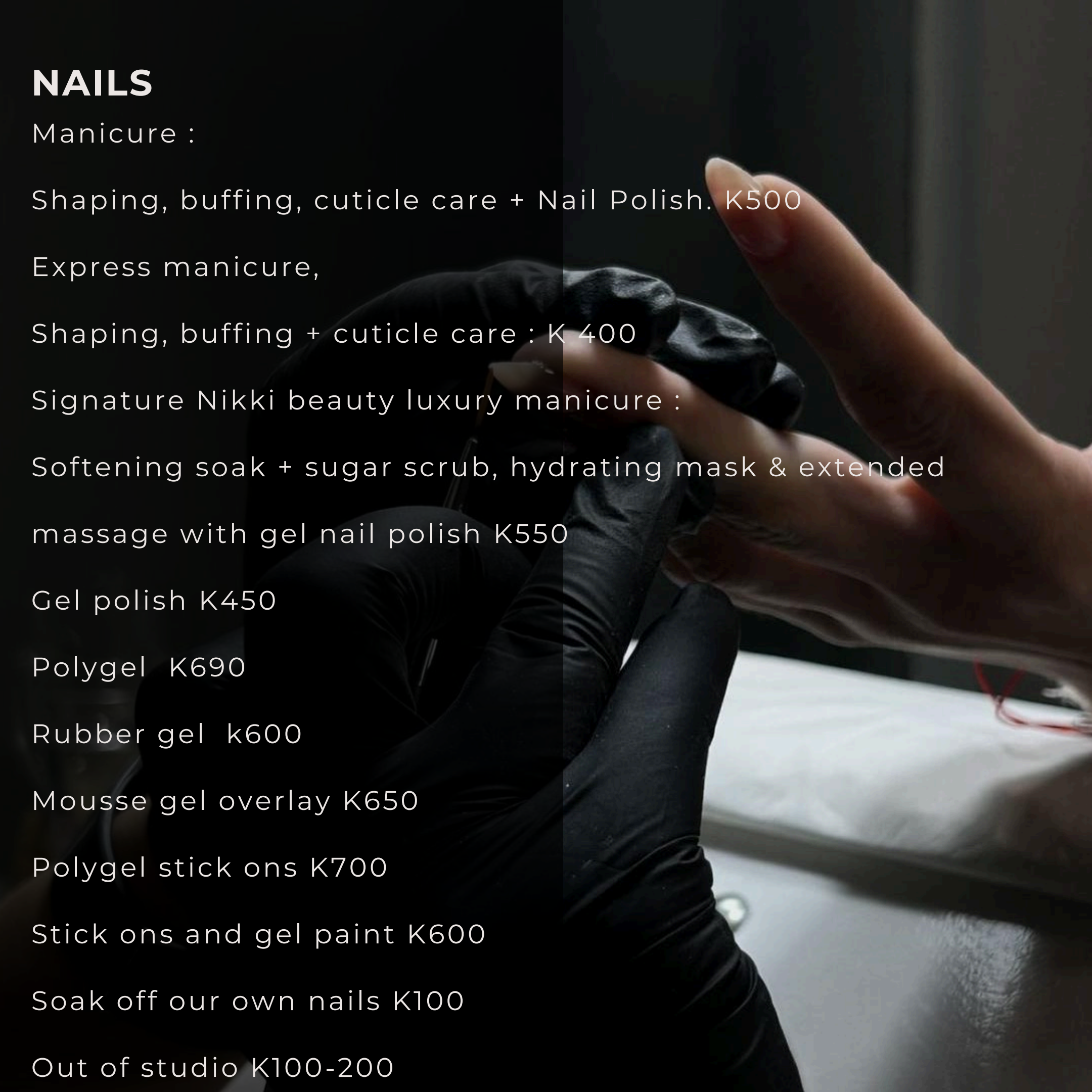
Mousse gel overlay K650

Polygel stick ons K700

Stick ons and gel paint K600

Soak off our own nails K100

Out of studio K100-200



NAILS

NAIL ART

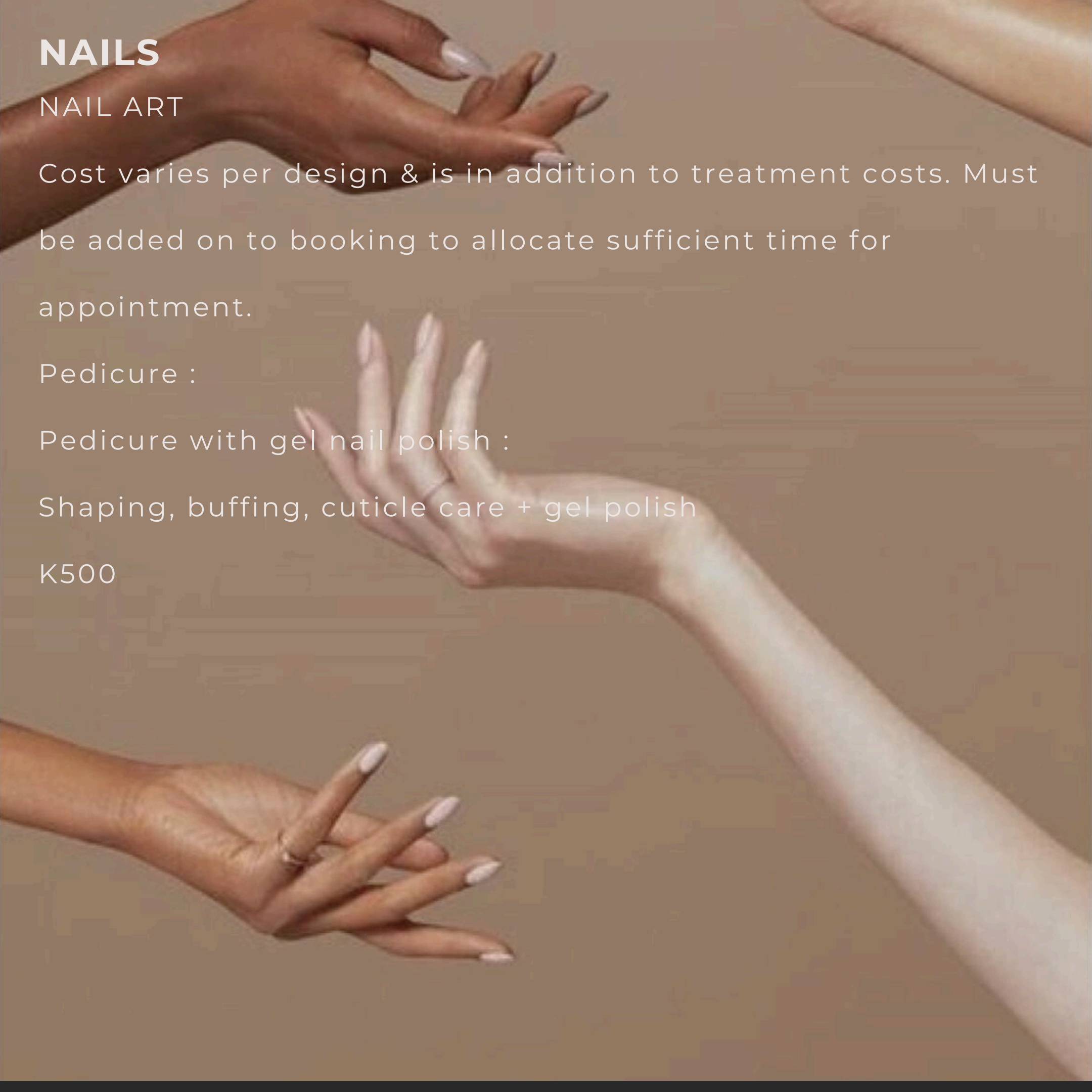
Cost varies per design & is in addition to treatment costs. Must be added on to booking to allocate sufficient time for appointment.

Pedicure :

Pedicure with gel nail polish :

Shaping, buffing, cuticle care + gel polish

K500





Signature Nikki beauty luxury pedicure

Softening soak + sugar scrub, hydrating mask, callus care & extended massage with gel nail polish. k650

Kids mani/pedi k300

Kids 30min light massage k250

Kids spa combo k750

Pedicure

Parafin pedicure - k700

Jelly pedicure - k800

Foot massage

Junior k100

Senior k200

Hairdressing

Wash and blow dry k400-k550

Wash and cut k350-k400

Wash cut and blow dry k650-k850

Hilights :

Long hair k1600-k2000

Half head k1250

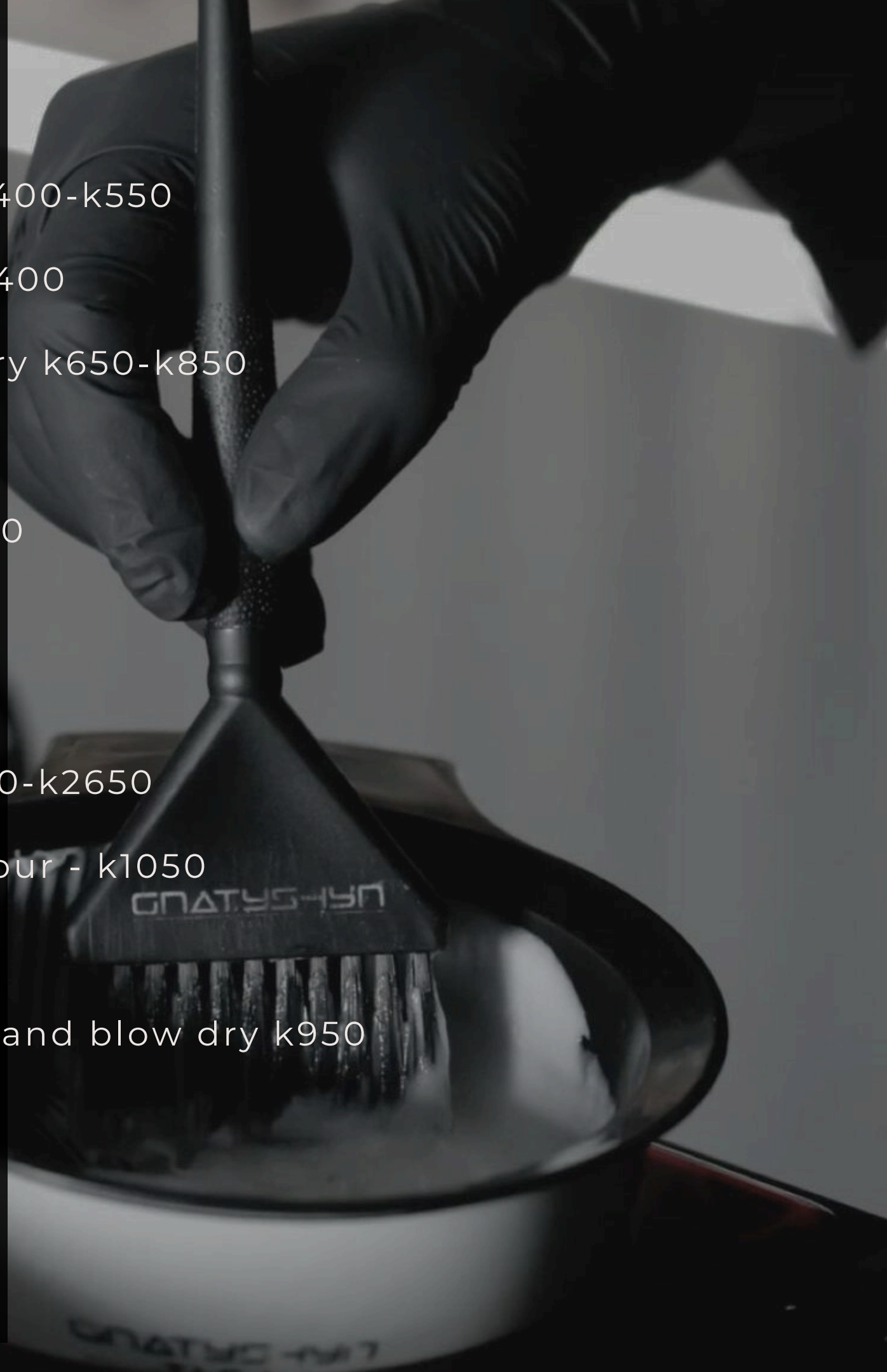
Hair Colours :

Full head colour k1600-k2650

Half head (roots) colour - k1050

Half head roots k840

Hair mask/treatment and blow dry k950



Mykrokeratin Hair Treatment

short hair k1800

medium k2500

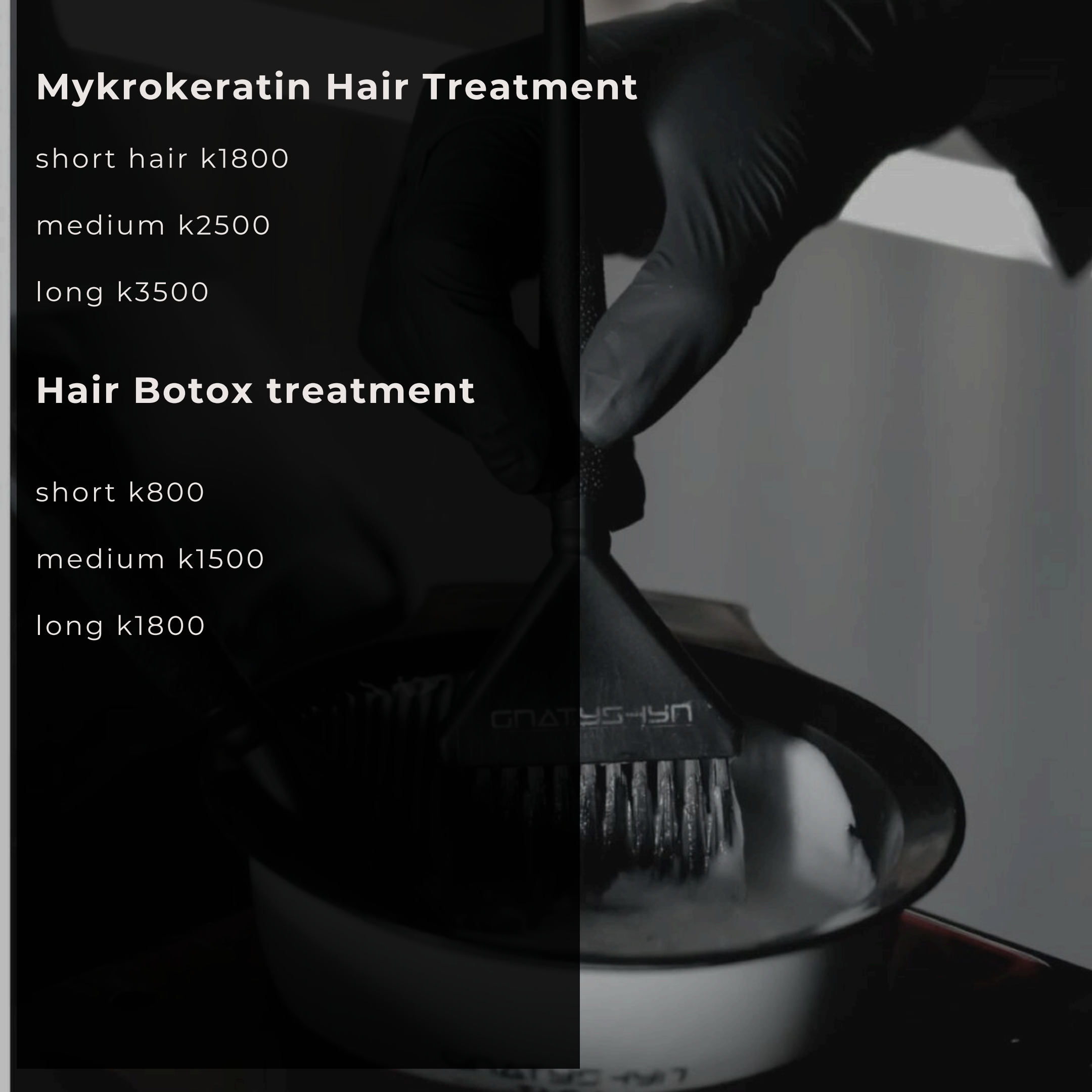
long k3500

Hair Botox treatment

short k800

medium k1500

long k1800



Makeup trials are the same price as the actual makeup glam.

An extra K300 for CBD & surrounding areas and K600 and above for areas outside CBD & surrounding will be charged when working at an off-site(house calls)location of the client's choice(which is separate from transport costs). All transport costs for a return trip will be covered by the client.

All slot bookings will attract A non-refundable K250 deposit for each face in the case of a group appointment.

Bridal deposit has a fee of \$50-\$100

Payments accepted via:

Airtel money- 0772889968

(inclusive of withdraw charge)

Ewallet or paytocell FnB/ABSA

SLOTS WILL ONLY BE CONSIDERED BOOKED UPON RECEIPT OF
(K250 for party makeup and \$50/100 for bridal makeup)PAYMENT
OF DUE BILL

DESTINATION WEDDINGS. Rates remain the same as listed for bridal services, with the exception of all travel, lodging, and food expenses. These expenses are required to be covered by the client, along with a \$250per day on-location fee. Accommodation has to be to our standards 4* plus anything less won't be acceptable. If I leave the day before or the day after another K2,500 will be charged.

looking forward to hearing from you .

Korean spa

Essentially, you can think of it as a sort of deep cleanse for your scalp to remove any impurities such as dirt, oil, or dead skin cells through gentle exfoliation, soaking, and steaming using special devices and products.

Korean head spa treatments even improve the condition of your hair and make it softer! Your hair follicles, which eventually form into hair strands, grow from your scalp, so cleaning and treating the scalp will not only help keep your scalp healthy, it will also keep your hair healthy! AS you sink into a plush chair, our expert staff begin to work their magic, using a blend of massage techniques to ease away tension and stress from your scalp and body. The soothing touch of their hands and tranquil environment creates a powerful sense of relaxation and renewal, as you feel your worries melting away.

Our treatments rejuvenate your scalp, ensuring it feels reinvigorated, clean, and balanced-leaving both your scalp and hair feeling refreshed

A close-up, vertical split-image showing a woman's face and head. The left side is in shadow, showing her eyes closed and a hand gently massaging her forehead. The right side is in soft light, showing her nose, lips, and a white towel wrapped around her head like a headband. The overall mood is relaxing and serene.

MASSAGE

During the treatment, our skilled therapists use a combination of specialized techniques, including scalp exfoliation, soothing massage, and invigorating steam, to cleanse and nourish the scalp. This meticulous process helps to remove buildup, stimulate blood circulation, and create a healthy environment for hair growth. The result? A refreshed scalp, revitalized hair, and a deeply relaxed state of mind.

Benefits of Korean Headspa

A Korean Headspa offers a range of benefits that go far beyond traditional hair care. Here's why it's a must-try experience:

Deep Relaxation: Life can be hectic, but our Korean Headspa provides a perfect escape. Our trained therapists use gentle, rhythmic massage techniques that work to release tension from your scalp, neck, and shoulders, promoting an overall sense of calm and relaxation. The experience is designed to soothe both your body and mind, allowing you to let go of stress and embrace a peaceful state.



MASSAGE

Enhanced Scalp Health: A healthy scalp is the foundation of beautiful hair. Our Korean Headspa deeply cleanses the scalp, removing impurities, excess oil, and product buildup that can cause common scalp issues such as dryness, oiliness, and dandruff. The nourishing products used during the treatment are packed with essential nutrients that help balance the scalp's natural oils, improve hydration, and maintain overall scalp health.

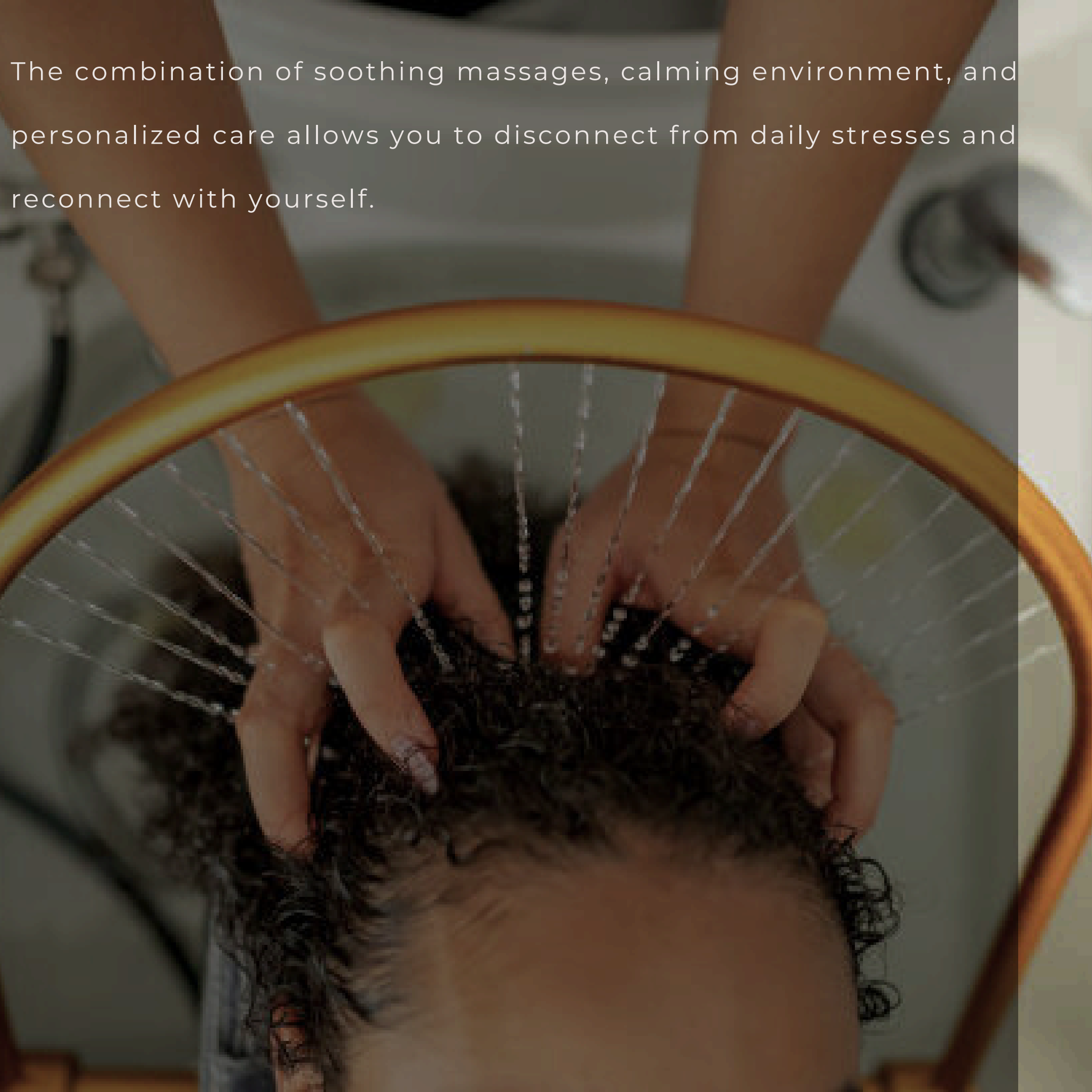
MASSAGE

Stimulated Hair Growth: Our Headspa treatment goes beyond pampering; it actively supports hair health. By improving circulation and delivering targeted nutrients, the treatment stimulates hair follicles and encourages healthy hair growth. Whether you're looking to improve thinning hair or simply want to maintain a full, vibrant mane, this treatment can make a noticeable difference.

- Improved Hair Texture: Say goodbye to dull, lifeless hair. The nourishing ingredients and targeted scalp care techniques used in our Korean Headspa help to strengthen each hair strand, resulting in smoother, shinier, and more manageable hair. The treatment works to repair damage, enhance moisture retention, and promote a healthy, beautiful texture.

- Stress Relief: In today's fast-paced world, taking time for self-care is more important than ever. The Korean Headspa is not just about hair and scalp health; it's also about providing a sanctuary for your mind.

The combination of soothing massages, calming environment, and personalized care allows you to disconnect from daily stresses and reconnect with yourself.



Korean Head spa

What is included in the treatment?

What is included in the treatment?

Your treatment is personalized and follows 10 to 14 steps that flow together for a complete scalp care experience. We start with a scalp analysis, followed by nourishing oiling and massage, using stimulating tools to enhance circulation. A detox treatment, combined with neck and shoulder massage, leads into a series of deep cleanses and conditioning. The session finishes with relaxing hydrotherapy.

* Can I have a service done if I have hair extensions?

Yes, of course! Ideally, we recommend scheduling an appointment between your hair extension maintenance visits. However, many of our repeat clients enjoy our services with hair extensions

•Does this treatment work for all hair types?

Yes, our treatments are designed to be effective for all hair types.

We welcome everyone to experience the magic of this Head Spa.

Can I receive a treatment if I have psoriasis or other scalp conditions?

Yes, we welcome clients with psoriasis, dermatitis, eczema, and other scalp conditions. Our treatments are tailored to provide relief and enhance scalp comfort. However, we recommend consulting with your healthcare provider before booking to ensure that our services are appropriate for your specific condition and needs.

- Can I receive head spa treatments if I'm pregnant? Please be aware that our services require you to lay on your back for an extended period of time. While our treatments are generally safe and gentle, we highly recommend consulting with your doctor before booking if you're pregnant. It's always best to get approval from your healthcare provider to ensure the treatment is appropriate for you.

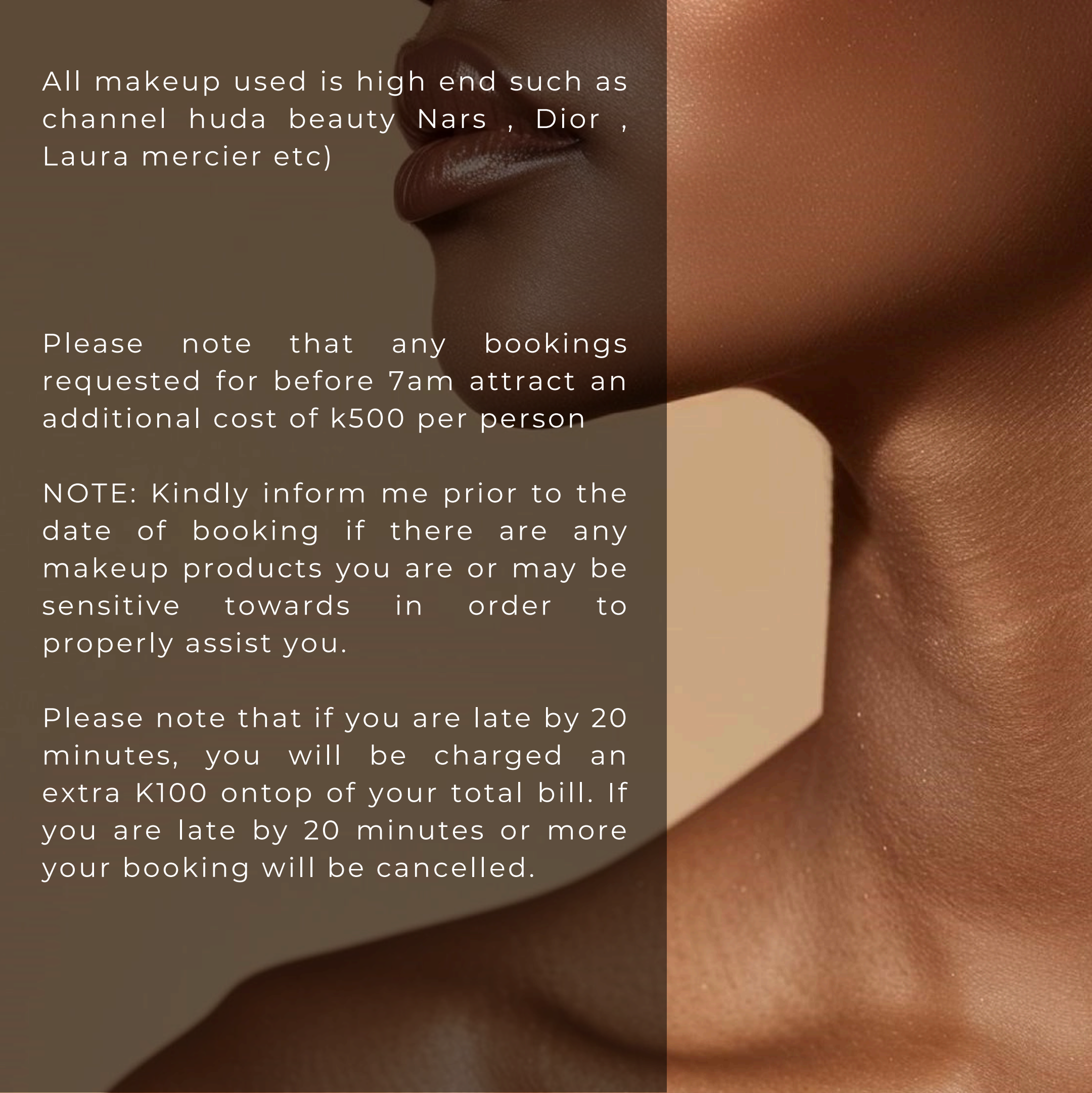
Please note:

We do not recommend a head spa treatment immediately after a colour or perm, as it may affect the results.

Deep cleansing may loosen curls or cause colour to fade faster.

90min- k1600

Includes blow dry



All makeup used is high end such as channel huda beauty Nars , Dior , Laura mercier etc)

Please note that any bookings requested for before 7am attract an additional cost of k500 per person

NOTE: Kindly inform me prior to the date of booking if there are any makeup products you are or may be sensitive towards in order to properly assist you.

Please note that if you are late by 20 minutes, you will be charged an extra K100 ontop of your total bill. If you are late by 20 minutes or more your booking will be cancelled.

Eyelash Extension

Eyelash extensions Here at Nikki Beauty we create beautiful personalised lash extension sets specifically designed for each client with their own unique lash mapping. Full Classic set:(With 1<10 years of experience)

Hybrid Lash Set

A mixture of Russian and Classic lashes are applied to the natural lashes to give an enhanced yet natural look. (patch test required) - 2hrs

